

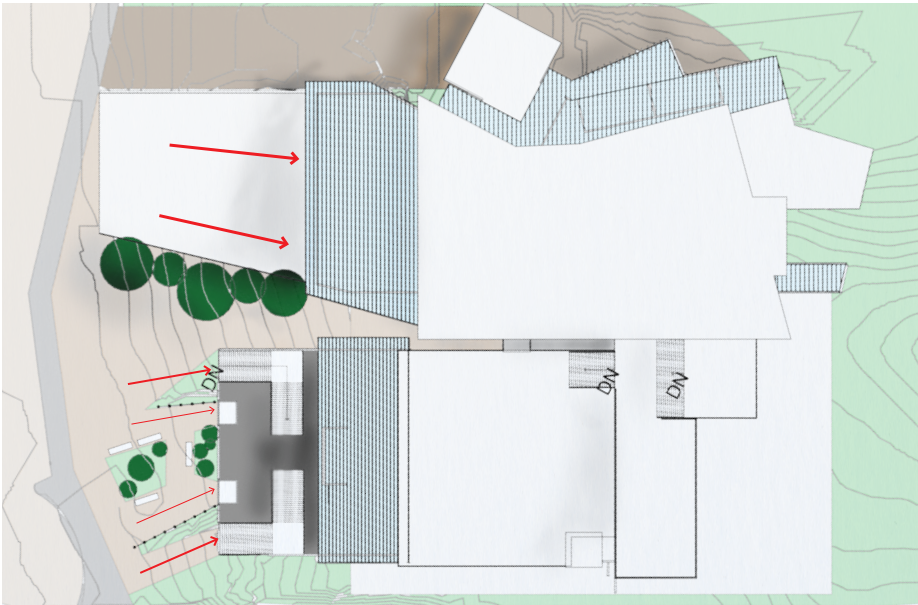
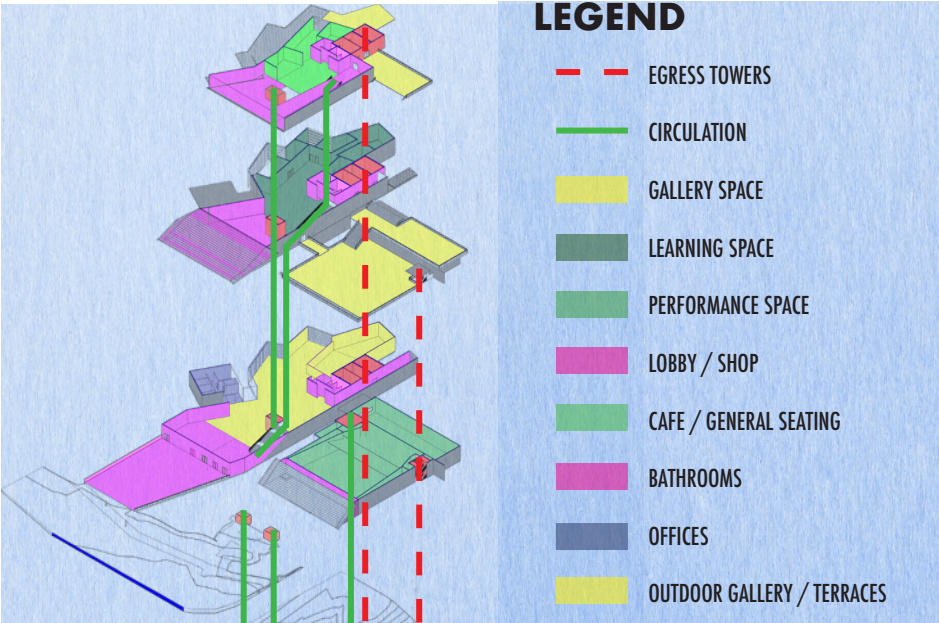
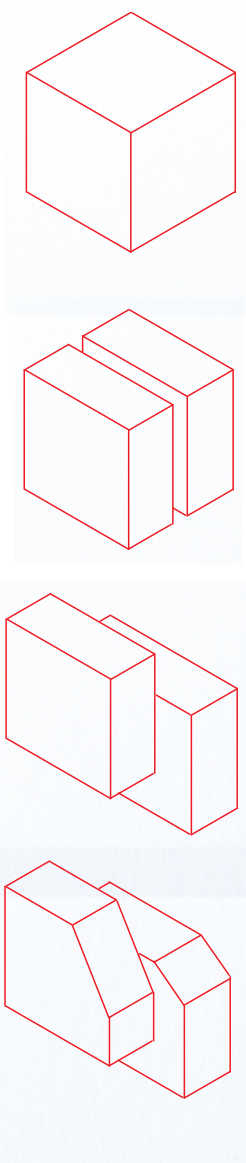
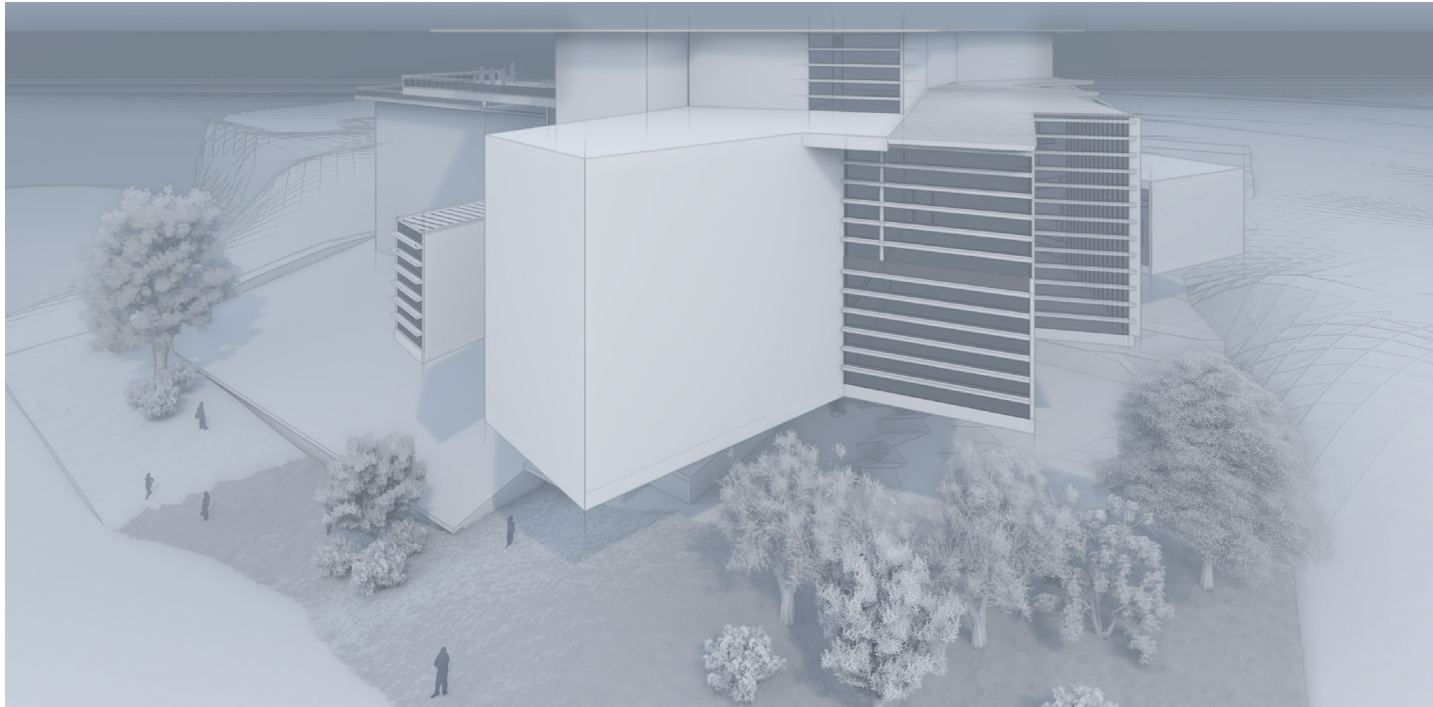
JOSIAH CLINE

CAL POLY
ARCHITECTURE

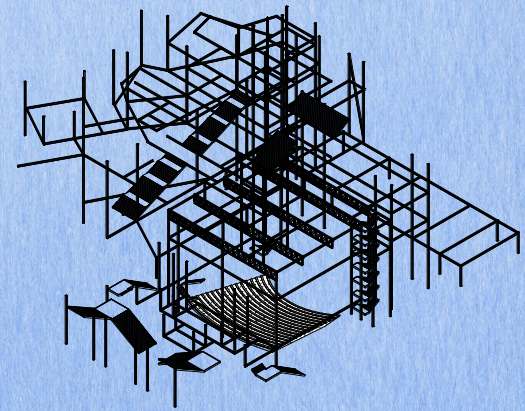
Culver City Contemporary Arts Center

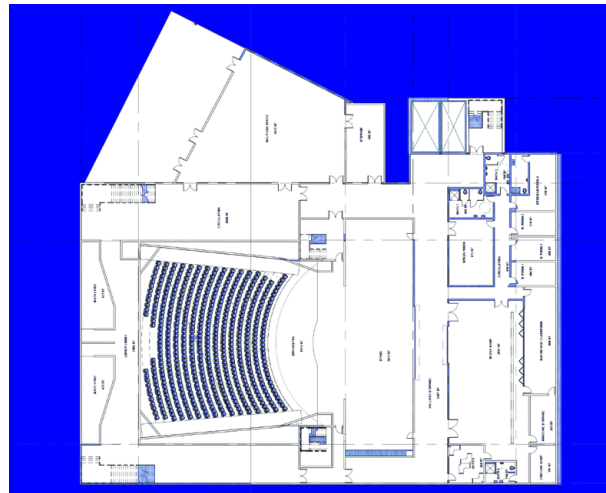
Fall 2018

What is a gallery space? How can architecture contribute to the creation and re-imagination of what may be considered art?

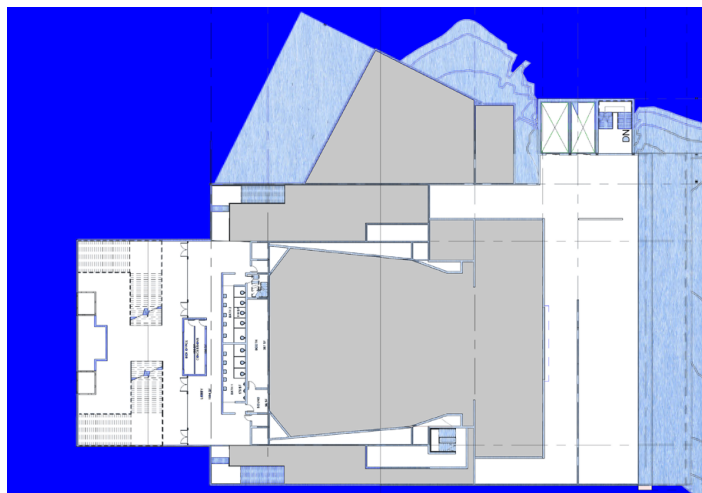


STRUCTURE

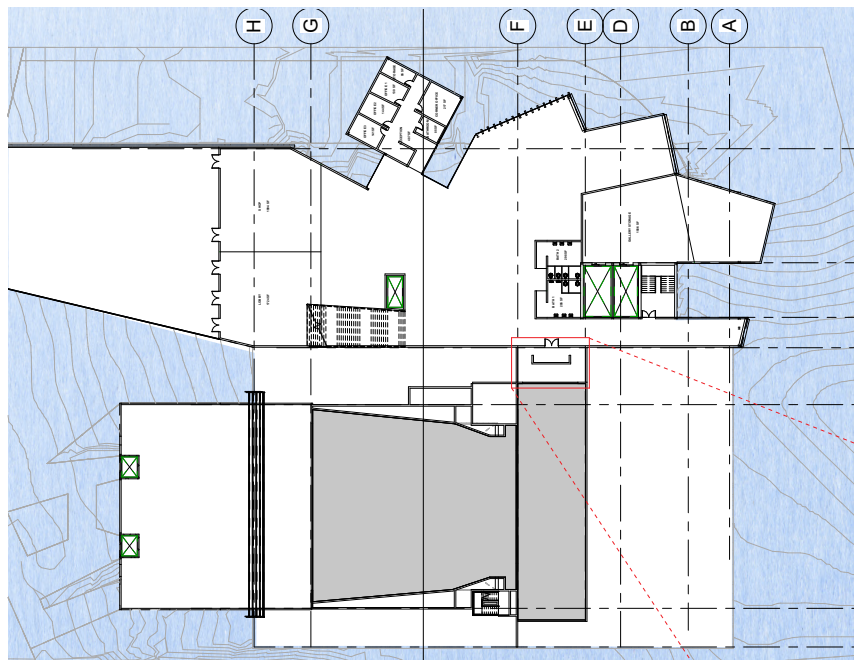




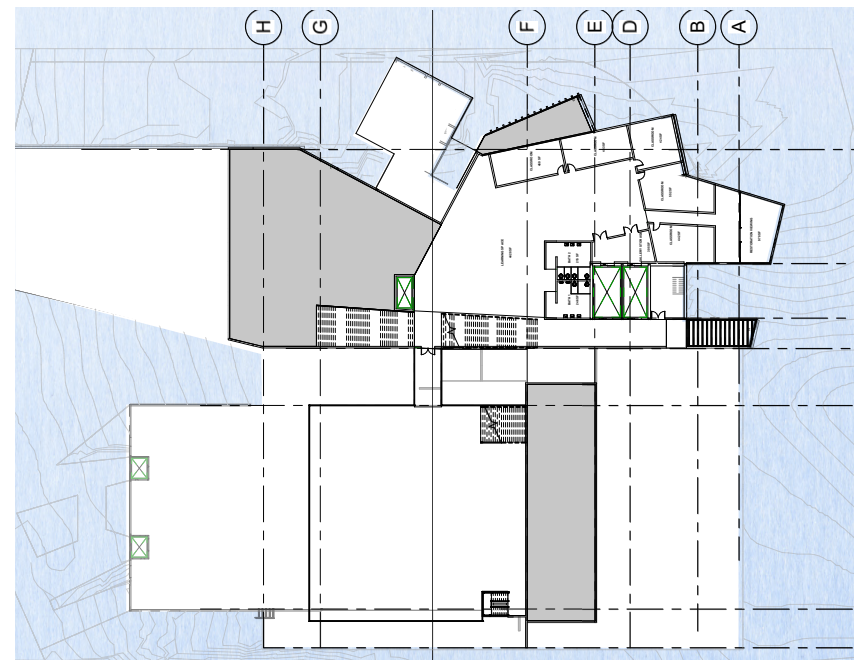
PERFORMANCE LEVEL



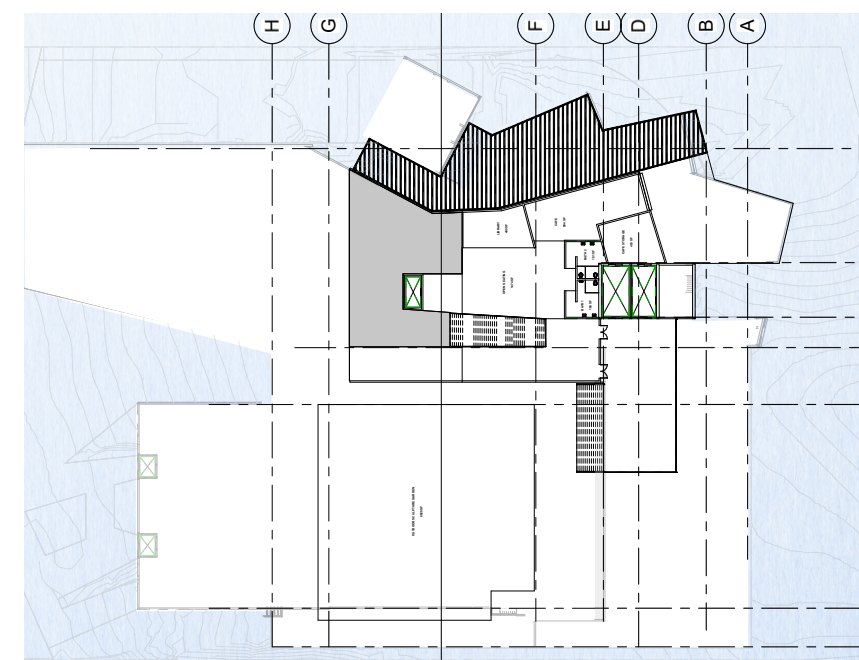
MEZZANINE LEVEL



ENTRANCE LEVEL

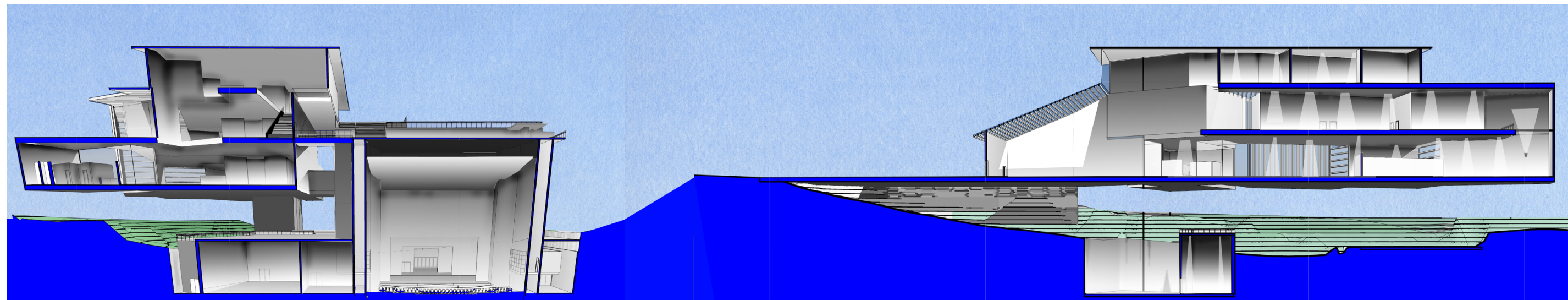


GALLERY LEVEL



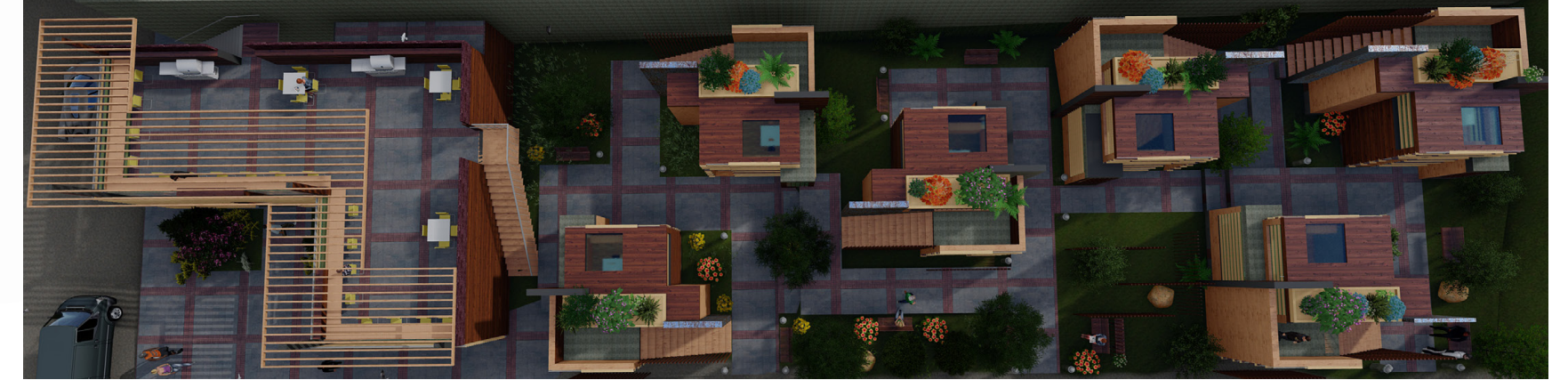
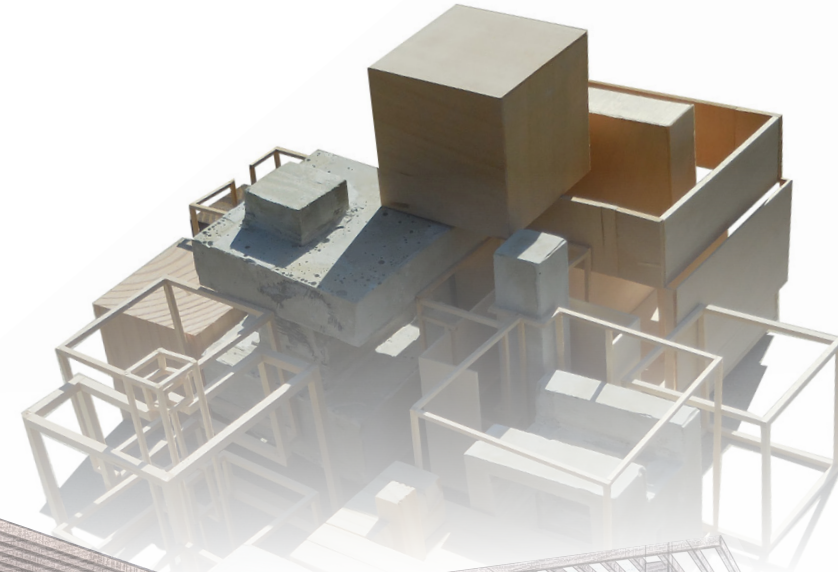
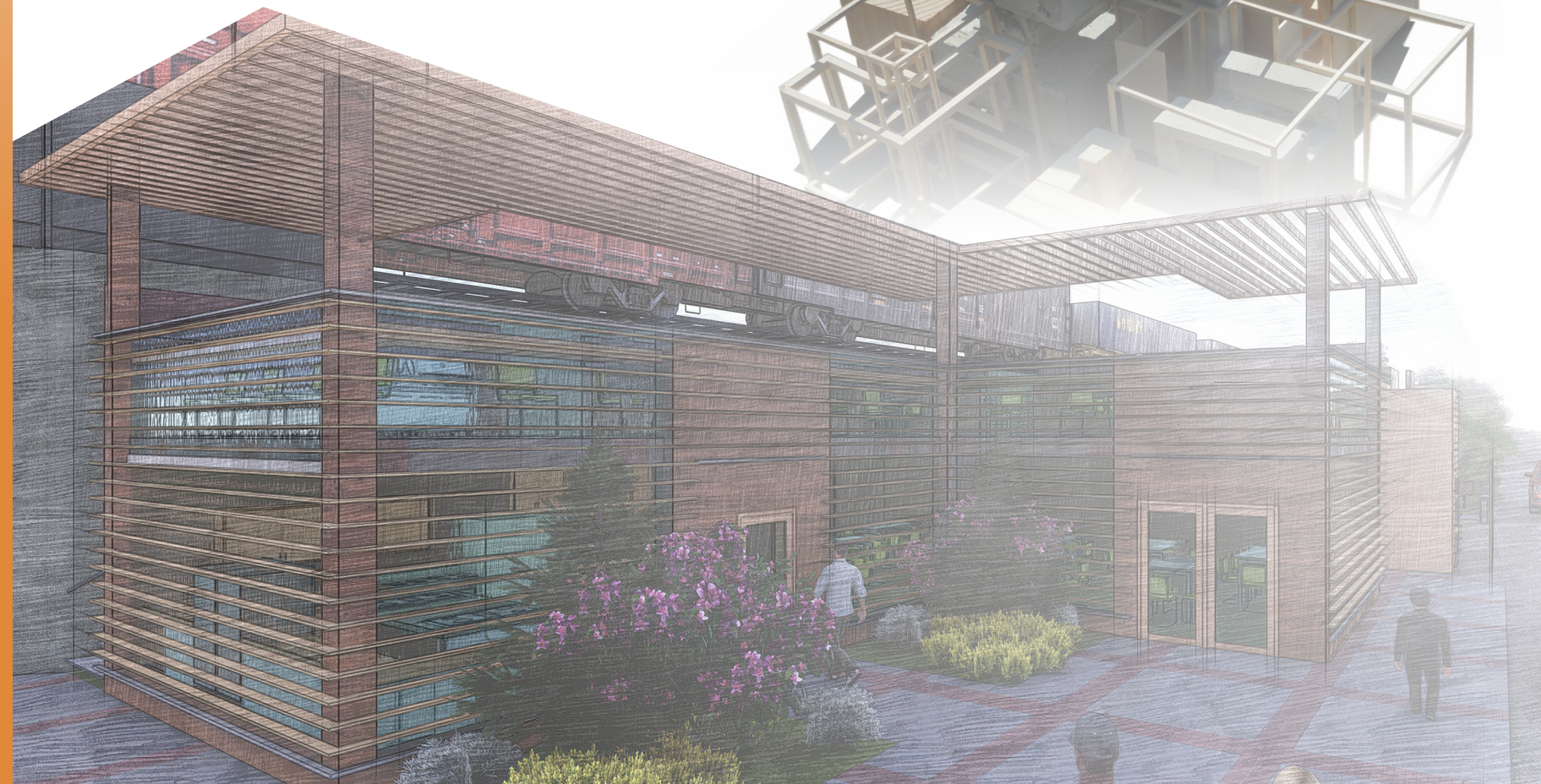
CAFE LEVEL

This project I started with interviewing two theater managers to understand what they enjoyed as well as disliked in the theaters they worked in. From there I designed my building from the inside out starting with the theater and backstage. I then created my gallery spaces to be as flexible as possible with very few interior walls and a different take on what it means to be a performance space. The envelope was something that came at the very end and I only made moves to the exterior if it still worked with the interior program.



Housing for the Homeless

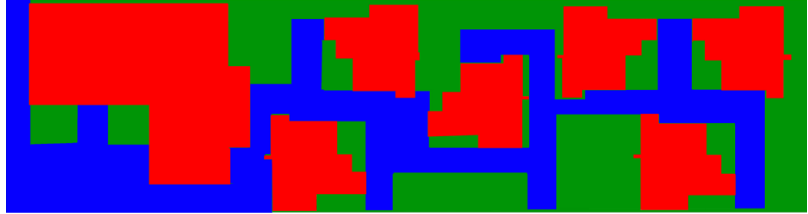
Fall 2017



Six 200 SF Houses based off of inspiration from a series of 12 cubes to house people experiencing homelessness. Each form based off of the same cube with the materiality of each form based off the materials used in the series. Function then fits to the form of each building.

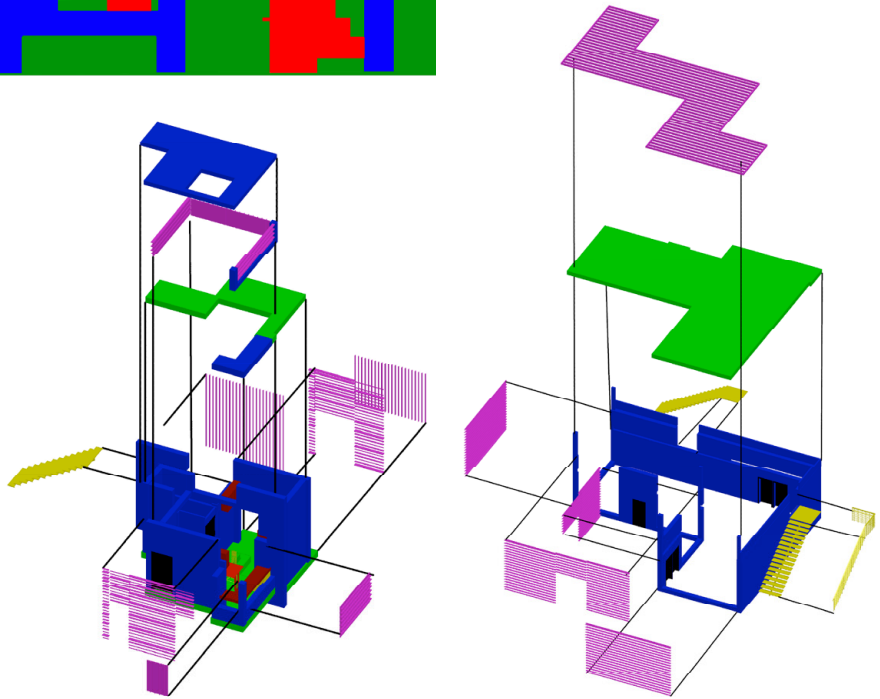


The site itself is slightly sloping along with the adjacent road. Every material used in this project was a material that one of the 12 cubes was made out of wood planes, wood dowels, casted concrete, and solid wood.



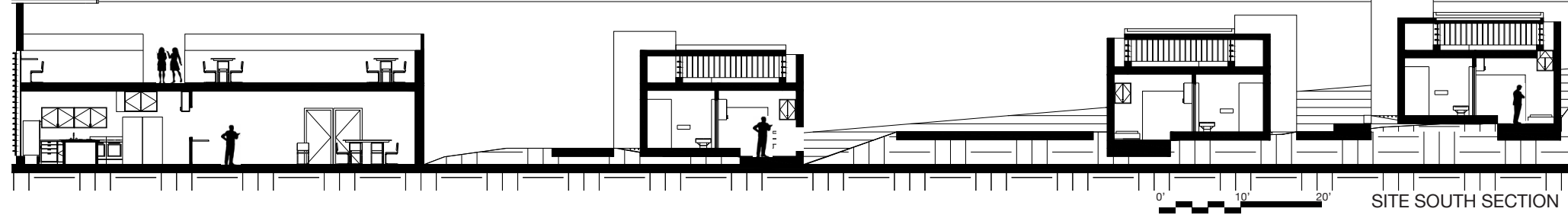
LEGEND
■ HABITABLE SPACE
■ CIRCULATION
■ LANDSCAPE

LEGEND
■ WOOD WALLS AND ROOF
■ WOOD STAIRS
■ FACADE SCREENING AND LOUVERS
■ CONCRETE FLOORING
■ FURNISHINGS
■ DOORS

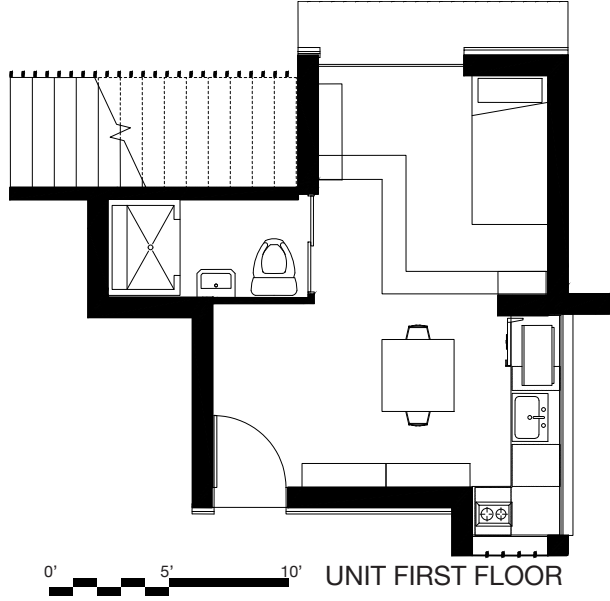


UNIT MATERIALITY

SOUP KITCHEN MATERIALITY

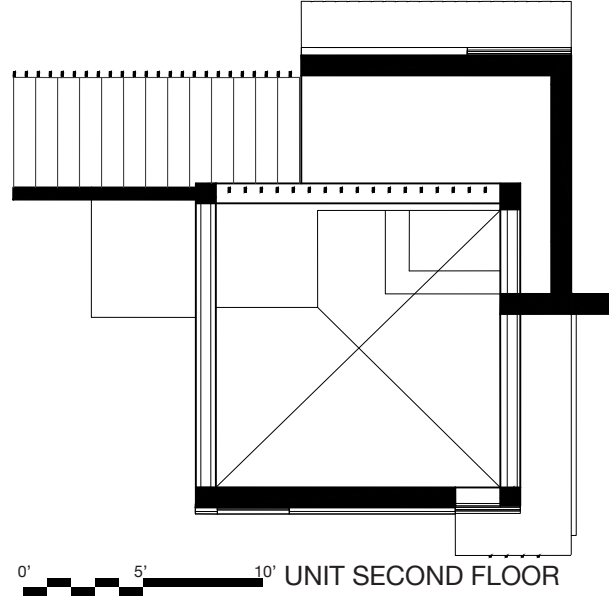


SITE SOUTH SECTION

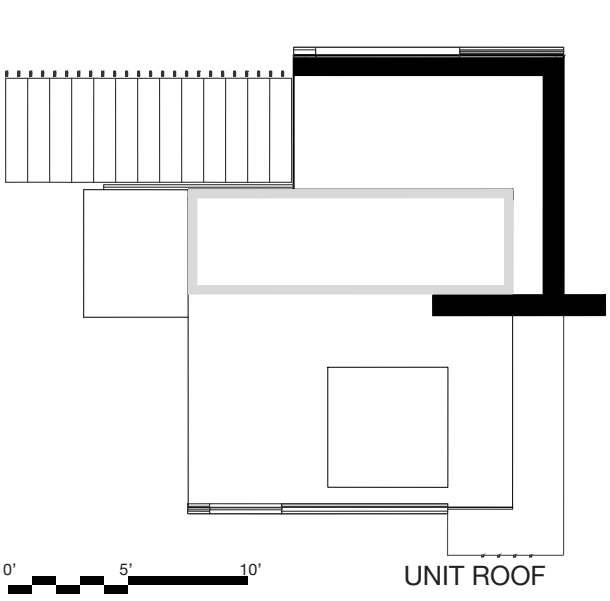


UNIT FIRST FLOOR

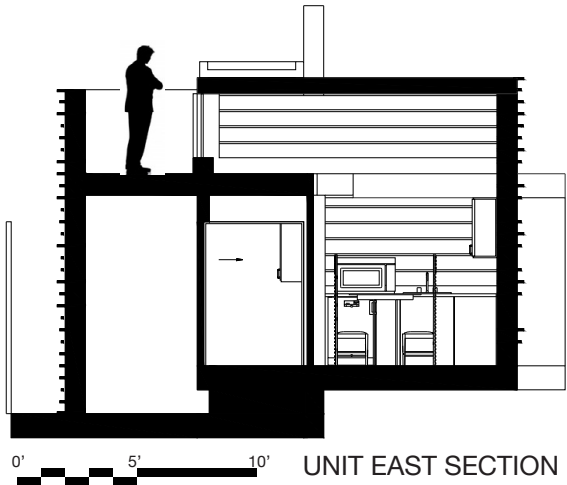
Each house has a rooftop terrace with a garden over the roof with an ample skylight to allow for natural daylight to permeate the space directly over the living room + kitchen



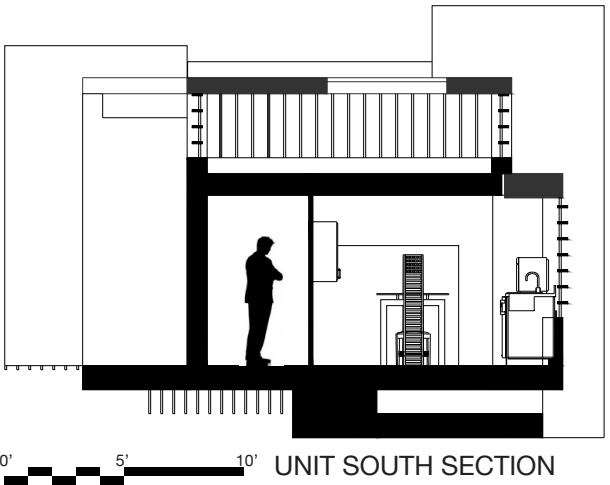
UNIT SECOND FLOOR



UNIT ROOF



UNIT EAST SECTION



UNIT SOUTH SECTION

Co-op Housing Project Spring 2018

How can Lucas Numbers be expressed architecturally. Throughout this process, the entire project revolved around the golden ratio and Lucas Numbers.

Each window's dimensions are taken directly from two Fibonacci consecutive numbers i.e. 3'x5', 8'x13', etc



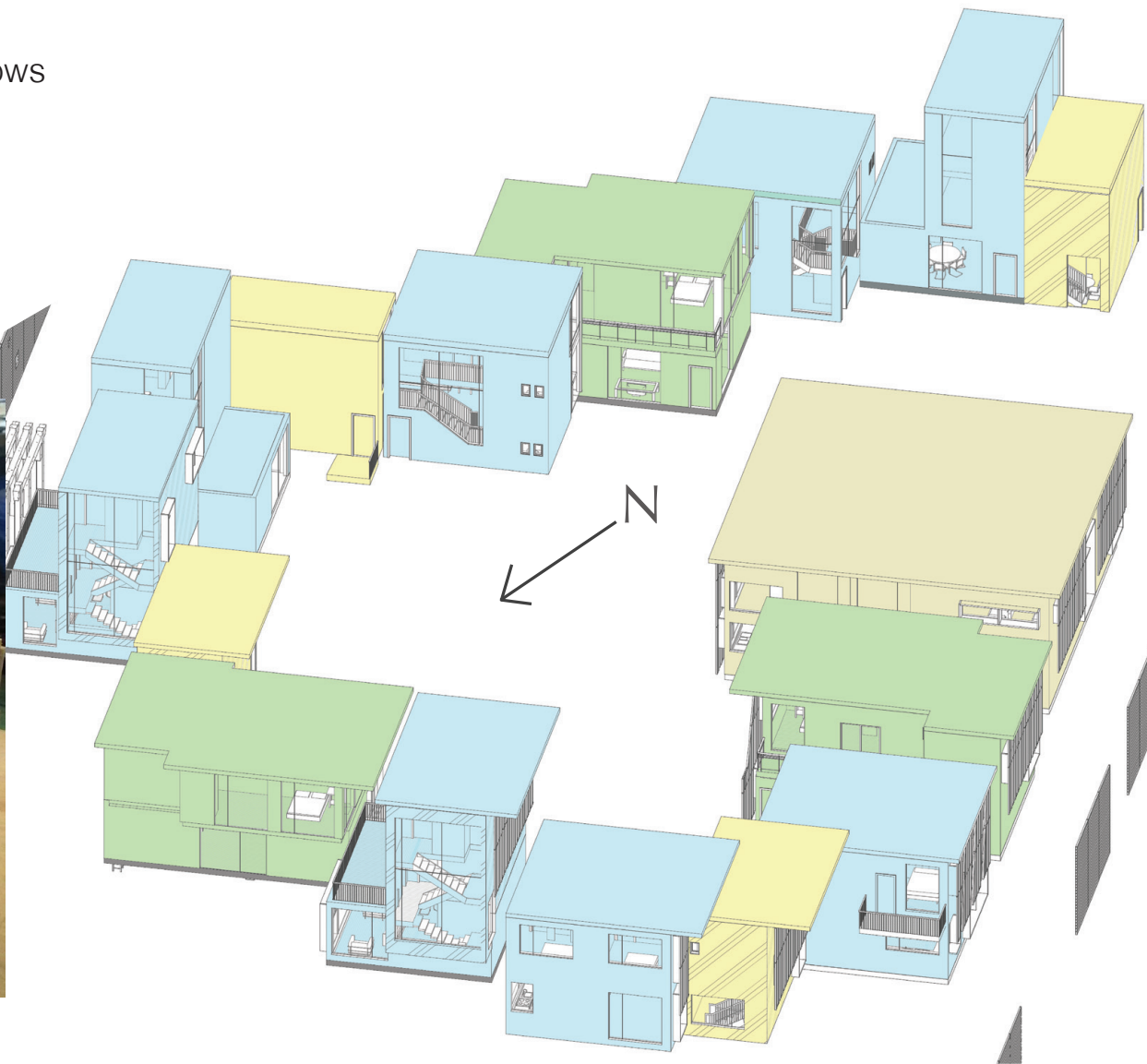
The housing complex layout is the golden spiral which is generated from the golden ratio. Each of the primary walkways lays on the edge of one of the golden rectangles that makes up the golden spiral.



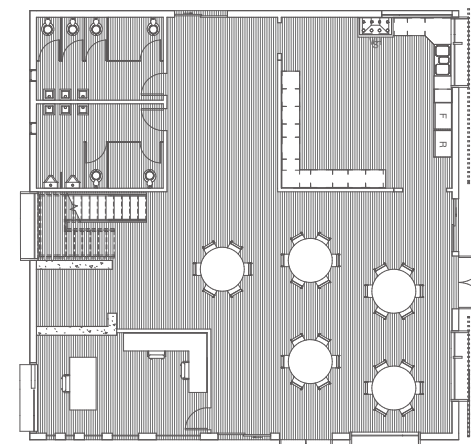
The amount of different sized units follows the Lucas Sequence of 1, 3, 4, 7, 11...
 The community center is 1 unit
 There are 3 600 SF units
 There are 4 1200 SF units
 There are 7 1800 SF units



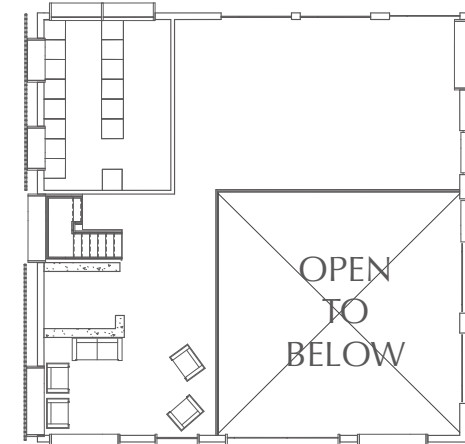
Section Model of Example Unit



COMMUNITY CENTER FLOOR PLANS



FIRST FLOOR PLAN

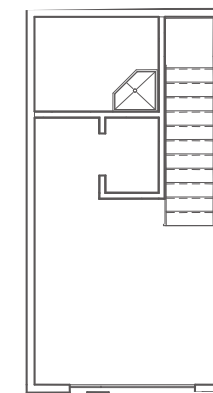


SECOND FLOOR PLAN

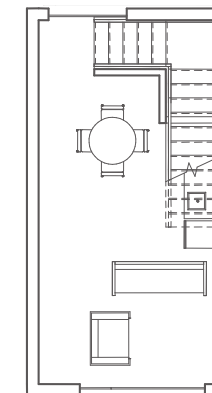
Each of the units are made up of different orientations of the same volumetric massing



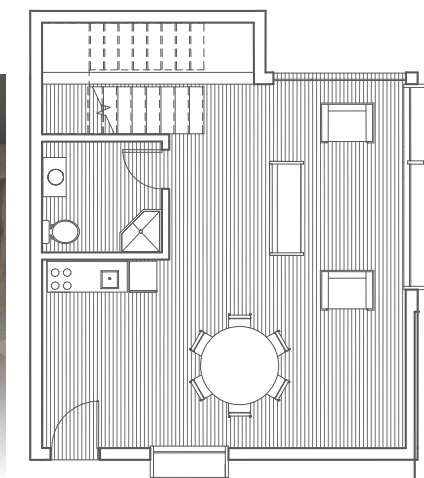
UNIT FLOOR PLANS



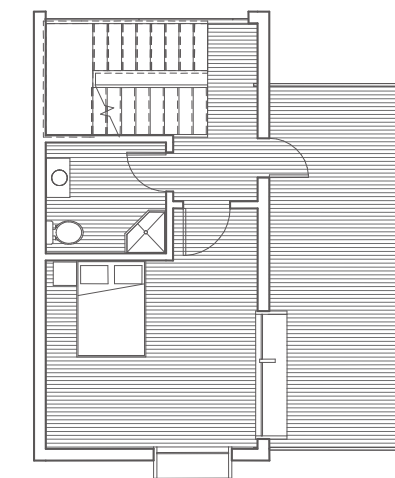
FIRST FLOOR PLAN



SECOND FLOOR PLAN



FIRST FLOOR PLAN



SECOND FLOOR PLAN

Cairo Urban Core : Community Work Type

